



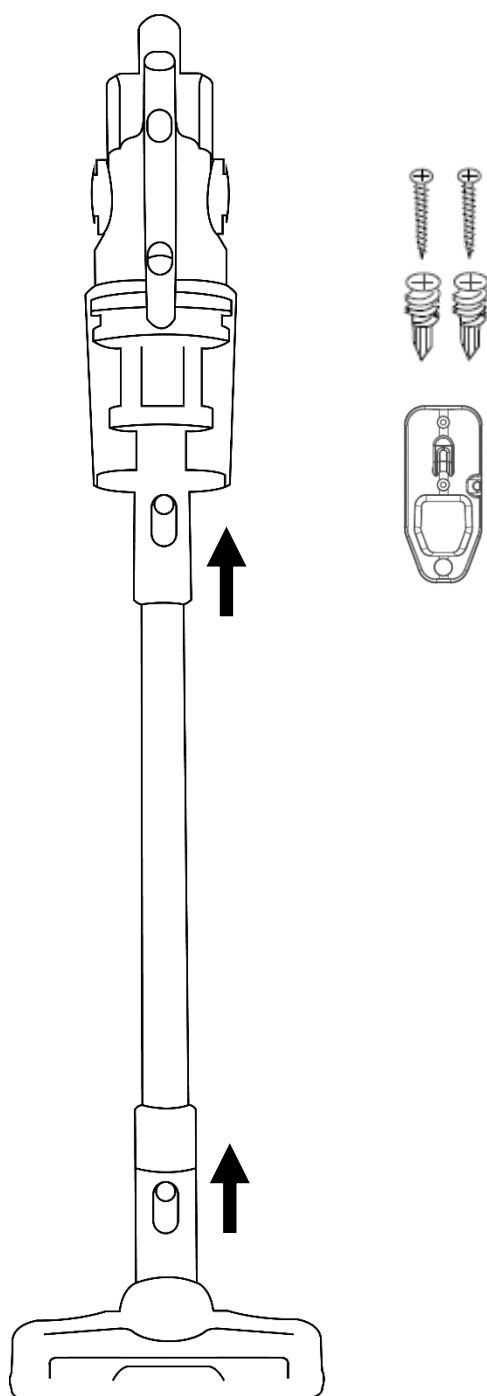
# Russell Hobbs

## Operating Manual

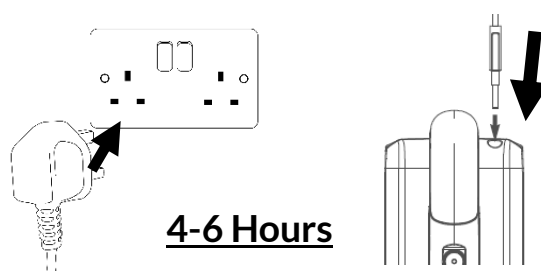
# SABRE<sup>2</sup>

RHHS3101

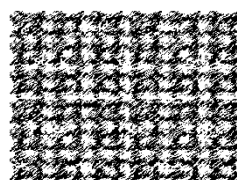
### ASSEMBLY



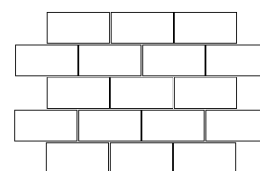
### FIRST TIME SETUP



### SUITABLE FOR USE



Carpet



Hard Floors

### WASH FILTERS

Wash the filters with cold water at least once a month

**1**  
MONTH

**REGISTER YOUR  
FREE 1 YEAR  
GUARANTEE  
TODAY**

# GUARANTEE

At Russell Hobbs, we take all our customer feedback seriously.

Feel free to contact our Product Care Team, on **0345 209 7461** who will be more than happy to assist you.

This product is guaranteed for 12 months from the date of the original purchase. If any defect arises due to faulty materials or workmanship, the faulty product must be returned to the place of purchase.

Refund or replacement is at the discretion of the retailer.

The following conditions apply:

- The product must be returned to the retailer with the original proof of purchase.
- The product must be installed and used in accordance with the instructions contained in this instruction guide and any other instructions for use which are supplied.
- It must be used for domestic purposes only and for its intended use.
- This guarantee does not cover wear and tear, damage, misuse or consumable parts.
- This does not affect your statutory rights.

## RUSSELL HOBBS CONTACT DETAILS

**Website:** [mda.russellhobbs.com](http://mda.russellhobbs.com)

**Telephone:** 0345 209 7461

**Address:** Product Care Customer Service, Green Bank Business Park, Hindley Green, Wigan, WN2 4AY

Note your serial number below for future reference.



*Image for illustration purposes only*

## REGISTER ONLINE

Visit our website to register your full parts and labour guarantee online.

[mda.russellhobbs.com](http://mda.russellhobbs.com)

## REGISTER BY PHONE

Call our friendly Product Care team.

0345 209 7461

## IMPORTANT SAFETY INSTRUCTIONS

- It is hazardous for anyone other than a competent person to carry out any service or repair operation that involves the removal of a cover which gives protection against exposure to electrical parts.
- The appliance is only to be used with the power supply unit provided with the appliance. The plug must be removed from the socket-outlet before cleaning or maintaining the appliance.
- This appliance contains batteries that are only replaceable by skilled persons. Battery must be removed before scrapping appliance. Battery must be disposed of safely.
- **WARNING:** For the purposes of recharging the battery, only use the detachable supply unit provided with this appliance. (Adaptor model number: MC2805B-B)
- If the adapter cord is damaged, it must be replaced by the manufacturer, its service agent or similarly qualified persons in order to avoid a hazard. Do not use with damaged cord or plug. Do not run the vacuum cleaner over any cables, as this will result in damaging the cable.
- This appliance can be used by children aged from 8 years and above and persons with reduced physical, sensory or mental capabilities or lack of experience and knowledge if they have been given supervision or instruction concerning use of the appliance in a safe way and understand the hazards involved. Children should not play with the appliance. Cleaning and user maintenance should not be made by children without supervision.

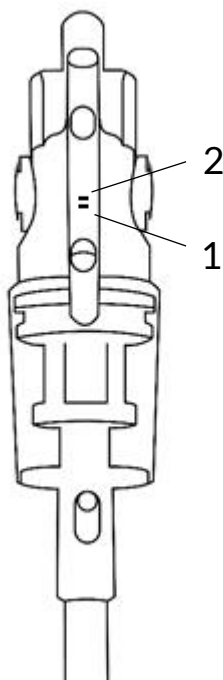
## IMPORTANT SAFETY INSTRUCTIONS

- This product is intended for household use only. Do not use outdoors. Do not direct at people, animals, electrical outlets, or equipment containing electrical components.
- Unplug from outlet when fully charged, and before putting on and taking off parts, and before cleaning. Do not leave the cleaner unattended while plugged in.
- Do not use vacuum cleaner if it has been dropped, damaged, left outdoors or dropped into water. Do not operate this appliance for anything other than its intended use.
- Keep the vacuum cleaner and adapter away from water; do not allow it to get wet. If unit is wet, do not plug unit into wall socket or turn unit on. Do not immerse in water or other liquids for cleaning. Do not handle the vacuum cleaner with wet hands.
- The use of accessory attachments not recommended by the appliance manufacturer may cause fire, electric shock or injury. Only use the accessories supplied by the manufacturer. Only use the unit when fully assembled.
- Do not use this vacuum to pick up water or any other liquids, combustible substances or hot/burning objects. Never place your fingers or other objects into any part of the cleaner. Be aware that loose clothing or hair may become trapped in the cleaner if improperly used.

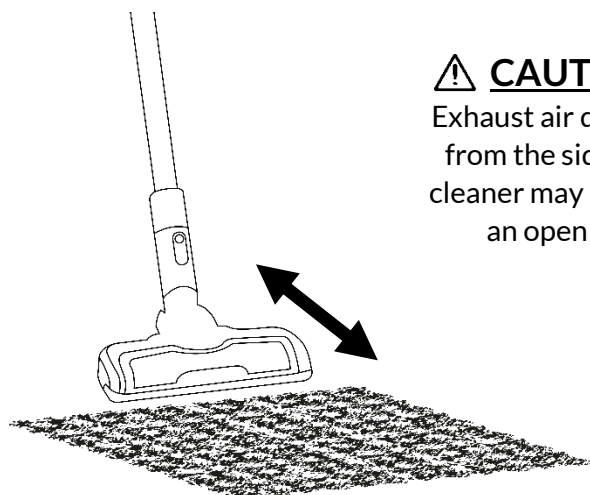
## LED WARNINGS

The two LED lights on the appliance will indicate different status of the vacuum.

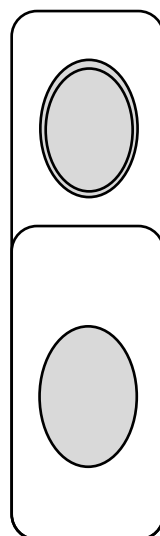
Light Sequence	Status
1 & 2 Illuminated during operation	Vacuum is charged
1 Flashing, 2 OFF during operation	Charge is running low
1 Flashing, 2 OFF during charging	Vacuum is charging
1 & 2 ON for 10min then OFF during charging	Vacuum is fully charged
All lights OFF during operation	Battery has no charge
All lights OFF during charging	Check plug socket has power, contact customer services



## OPERATION



**⚠ CAUTION ⚠**  
Exhaust air discharged  
from the sides of the  
cleaner may extinguish  
an open flame

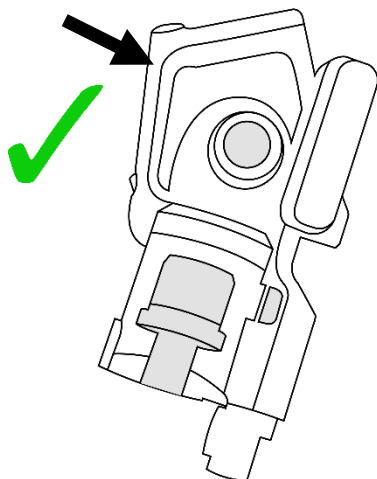


Power On



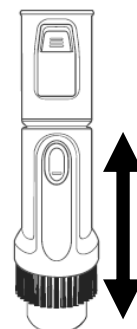
High Power  
Boost

## CARRYING THE APPLIANCE

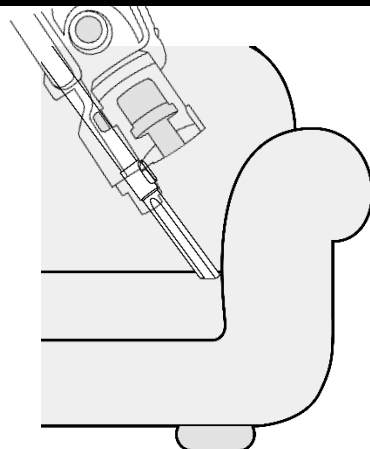
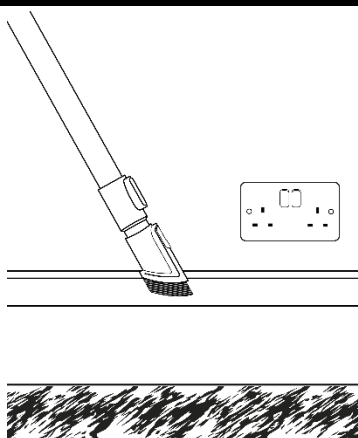


**⚠ CAUTION ⚠**  
Take care using  
as a carry handle

## TOOL ATTACHMENTS



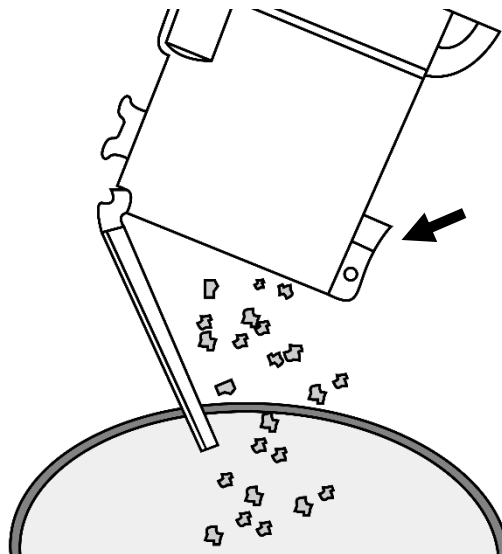
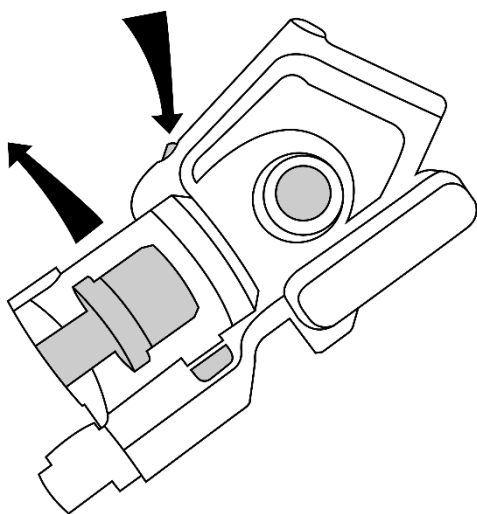
## TOOL ATTACHMENTS



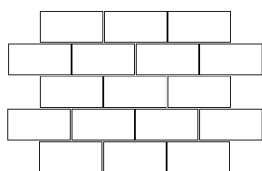
*\*Do not use on animals*



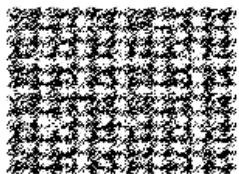
## EMPTYING THE BIN



## CARPETS OR HARD FLOORS

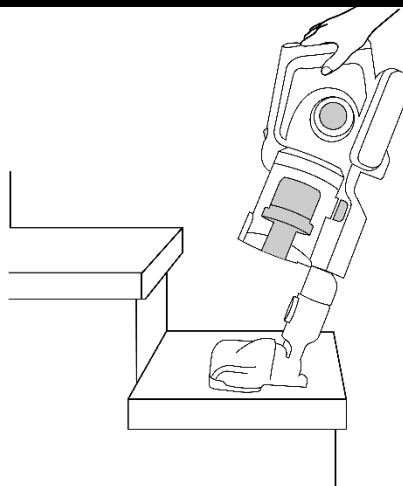


Normal Power

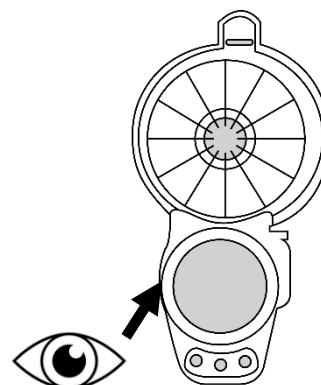
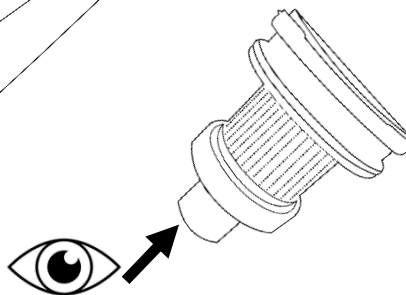
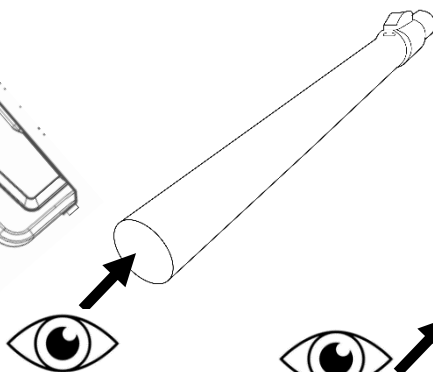
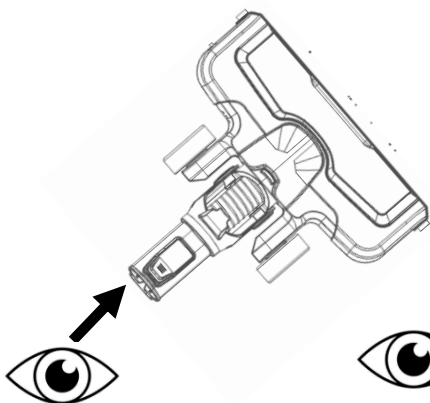


Normal Power OR  
Boost Mode/High  
Power

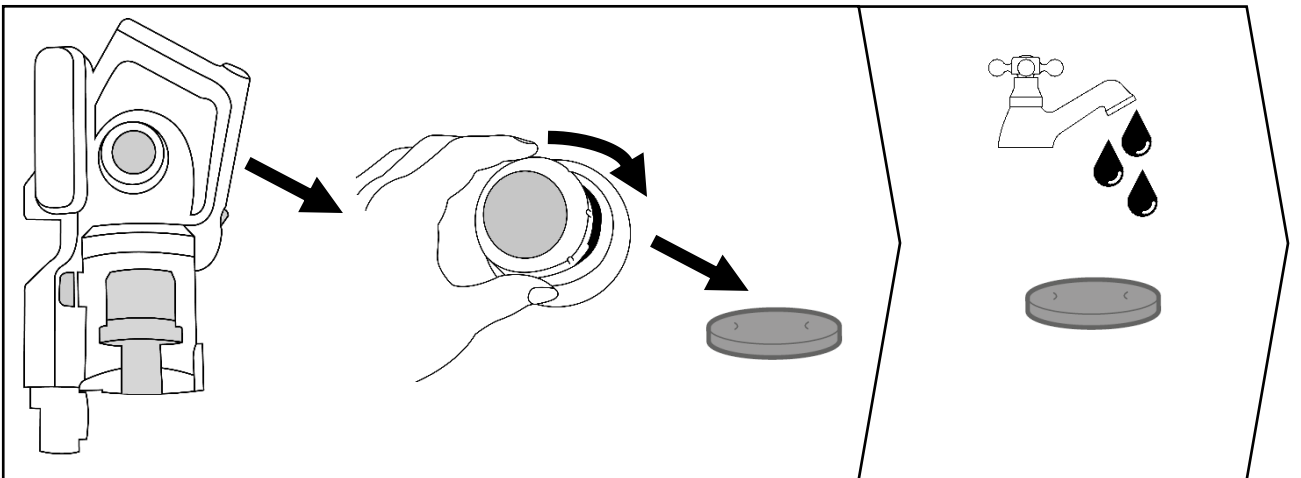
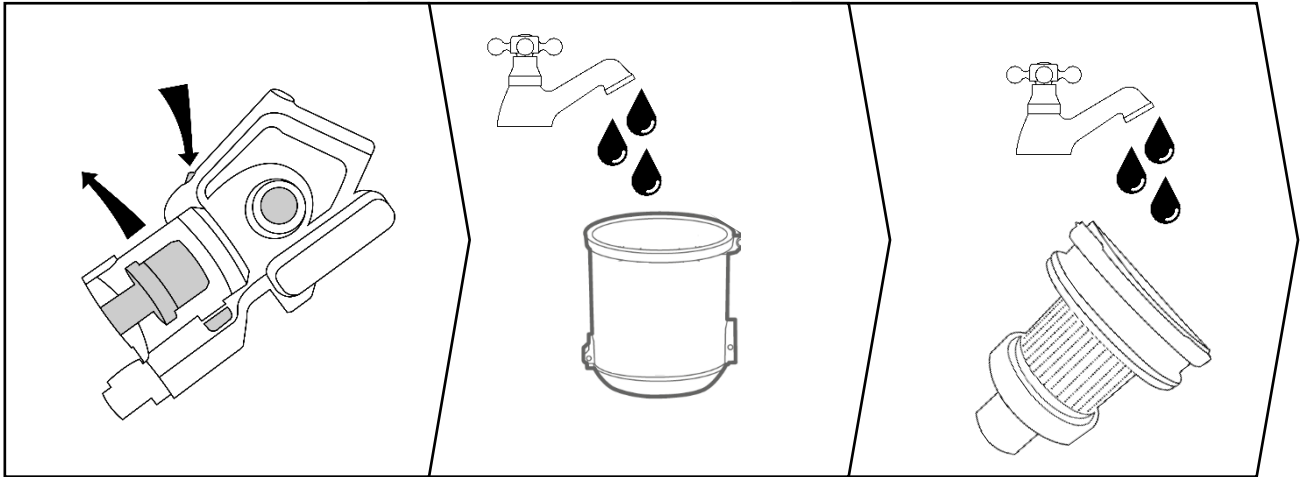
## STAIRS



## CHECKING FOR BLOCKAGES



# IMPORTANT! WASH THE FILTERS



**REGISTER YOUR  
FREE 1 YEAR  
GUARANTEE  
TODAY**

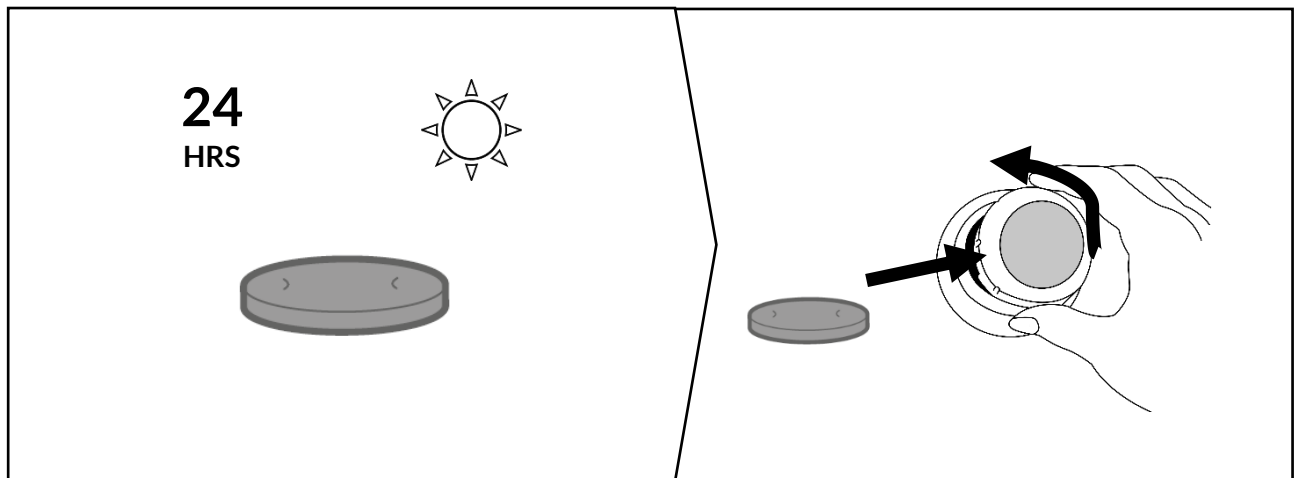
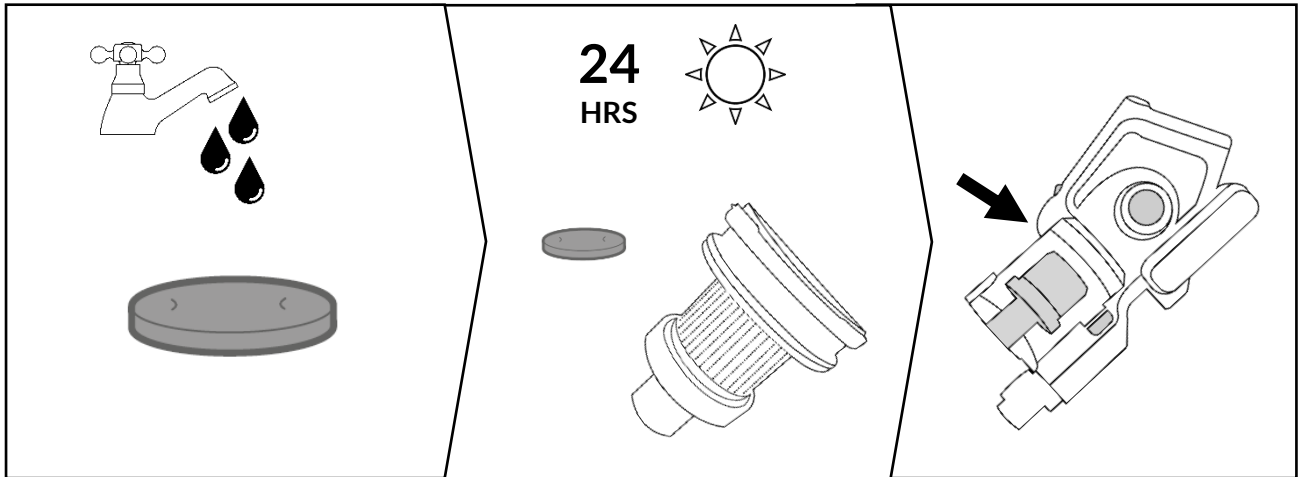
**WASH FILTERS**

Wash the filters with cold  
water at least once a month

**1  
MONTH**



# IMPORTANT! WASH THE FILTERS



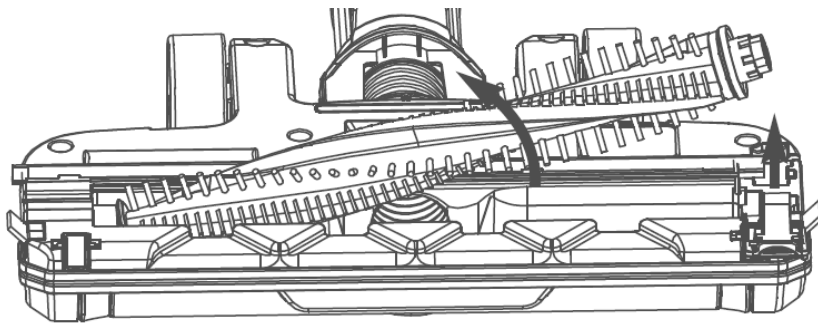
**REGISTER YOUR  
FREE 1 YEAR  
GUARANTEE  
TODAY**

**WASH FILTERS**

Wash the filters with cold  
water at least once a month

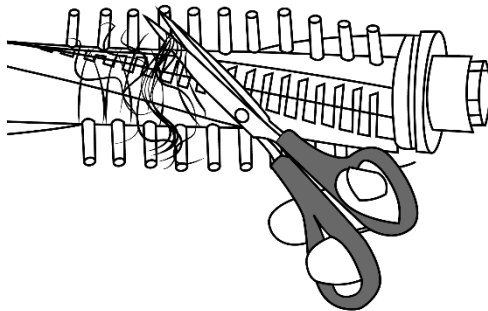
**1**  
MONTH

# IMPORTANT! KEEP BRUSH CLEAR OF HAIR

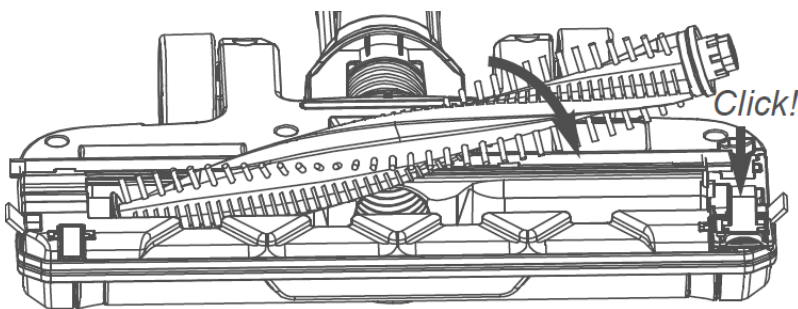


Taking care, press the clasp and lift the small cover off the brush head.

Remove the brush roll taking care not to lose any small pieces.



Taking care to cut only the hair, use scissors to ensure the brush roll is completely hair free.



Replace brushroll into floorhead.

Replace the small cover and click the clasp into place.

## PROBLEM SOLVING

The vacuum cleaner doesn't switch on	<ul style="list-style-type: none"> <li>• Check the vacuum is charged by plugging in for 4-5 hours</li> <li>• Check for any obvious signs of damage to vacuum, adapter, or plug</li> <li>• If recently used, allow to cool for 1 hour then try again</li> </ul>
The suction is decreasing and dirt is not adequately being picked up	<ul style="list-style-type: none"> <li>• Check if the dust canister is full; if so, empty it</li> <li>• Clean the filters following the instructions in this manual</li> <li>• Check there are no blockages in the tube, and clear any obstructions</li> </ul>
Vacuum cleaner is over heating	<ul style="list-style-type: none"> <li>• Check the filters are clean</li> </ul>
Dust is coming out of the vacuum	<ul style="list-style-type: none"> <li>• The dust canister has not been fitted correctly. Refit the canister following the instructions in this manual.</li> </ul>
The air exhausted from the vacuum smells	<ul style="list-style-type: none"> <li>• Clean the filters, tube, and dust container following the instructions in this manual</li> </ul>
The vacuum cleaner has cut out	<ul style="list-style-type: none"> <li>• Allow the vacuum to cool for 1 hour. Clean all filters and dust containers before trying to use again.</li> </ul>

If you are still experiencing difficulties with the appliance please contact us **BEFORE** returning the appliance to the retailer it was purchased from:

**Website:** [mda.russellhobbs.com](http://mda.russellhobbs.com)

**Telephone:** 0345 209 7461

**Address:** Product Care Customer Service, Green Bank Business Park, Hindley Green, Wigan, WN2 4AY

# IMPORTANT!

# 1

## WASH FILTERS

Wash the filters with cold water at least once a month  
The filters may require more frequent washing if vacuuming fine dust

## MONTH



## Russell Hobbs

This product is guaranteed for 12 months from the date of the original purchase. If any defect arises due to faulty materials or workmanship, the faulty product must be returned to the place of purchase.

By registering your product you will get an additional year guarantee free of charge. Additional cover can be purchased through the website.

### REGISTER ONLINE

Visit our website to  
register your full parts  
and labour guarantee online.

[mda.russellhobbs.com](http://mda.russellhobbs.com)

### REGISTER BY PHONE

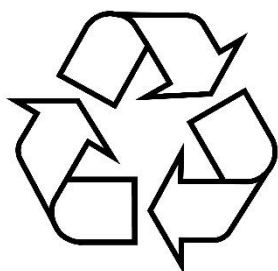
Call our friendly Product Care  
team.

0345 209 7461

# NOTES

# NOTES

Produced by Jiangsu Midea Cleaning Appliances Co.,Ltd, No.39 Caohu Avenue, Xiangcheng Economic Development Zone, Suzhou, Jiangsu, P.R. China			
MC2805B-B			
Input voltage	100-240	V	Specified by the manufacturer. Shall be a value or a range.
Input AC frequency	50-60	Hz	Specified by the manufacturer. Shall be a value or a range.
Output voltage	25.0 DC 29.0 DC	V	Nameplate output voltage. Shall indicate whether is AC or DC. In cases where more than one physical output or more than one output voltage at load condition 1 are measured, the sets of available Output voltage – Output current – Output power shall be published.
Output current	0.5	A	Nameplate output current. In cases where more than one physical output or more than one output voltage at load condition 1 are measured, the sets of available Output voltage – Output current – Output power shall be published.
Output power	12.5 14.5	W	Nameplate output power. In cases where more than one physical output or more than one output voltage at load condition 1 are measured, the sets of available Output voltage – Output current – Output power shall be published.
Average active efficiency	86.9	%	Declared by the manufacturer based on the value calculated as arithmetical mean of efficiency at load conditions 1-4. In cases where multiple average active efficiencies are declared for multiple output voltages available at load condition 1, the value published shall be the average active efficiency declared for the lowest output voltage.
Efficiency at low load (10 %)	73.1	%	Declared by the manufacturer based on the value calculated at load condition 5. External power supplies with a nameplate output power of 10 W or less shall be exempted from this requirement. In cases where multiple average active efficiencies are declared for multiple output voltages available at load condition 1, the value published shall be the value declared for the lowest output voltage.
No-load power consumption	0.08	W	Declared by the manufacturer based on the value measured for load condition 6.



Do not put used batteries, nickel cadmium, rechargeable, round cell or starter batteries in with your household rubbish. Take them to an appropriate disposal/collection site.

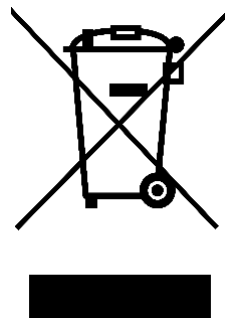


# Russell Hobbs

Russell Hobbs is a registered trademark used under license from Spectrum Brands (UK) Ltd. Made under license by G2S Limited, Wigan, WN2 4AY/G2S (NI) Ltd, Belfast, BT5 5AD

Russell Hobbs Support: call 0345 209 7461 or visit [mda.russellhobbs.com](http://mda.russellhobbs.com)

UK  
CA



The 'wheellie bin' symbol is known as the 'Crossed-out wheellie bin Symbol'. When this symbol is marked on a product/batteries, it means that the product/batteries should not be disposed of with your general household waste. Only discard electrical/electronic/battery items in separate collection schemes, which cater for the recovery and recycling of materials contained within. Your co-operation is vital to ensure the success of these schemes and for the protection of the environment. For your nearest disposal facility, visit [www.recycle-more.co.uk](http://www.recycle-more.co.uk) or ask in store for details.

SEDEX – Connecting businesses and their global suppliers to share ethical data and enabling improvement in ethical performance. Visit [www.sedex.org.uk](http://www.sedex.org.uk) for further information.

We reserve the right, due to possible changes to design, to alter the instruction manual without prior notice.